



RICHMOND HILL HOTEL

MEETING ROOM PHYSICAL DISTANCING CAPACITIES

Room	Length x Width x Height	Cabaret		Theatre		U-Shape		Classroom		Boardroom	
		1m	Standard	1m	Standard	1m	Standard	1m	Standard	1m	Standard
Ballroom	22 x 13 x 7	54	144	74	220	-	-	44	100	-	-
Thames	8 x 4 x 4	8	20	10	30	-	-	4	14	10	18
Richmond	14 x 12 x 3	30	64	46	120	13	40	20	50	15	30
Oak	12 x 5 x 3	12	30	18	72	15	22	12	18	14	28
Ormond	11 x 8 x 3	18	48	20	70	7	30	18	30	13	28
Stafford	11 x 5 x 3	12	30	15	50	13	22	12	18	14	28
Cambrian	7 x 6 x 3	-	-	-	-	-	-	-	-	8	15
Beaufort	6 x 5 x 3	-	-	-	-	-	-	-	-	4	12
Walpole	6 x 3 x 3	-	-	-	-	-	-	-	-	4	8
Ash	6 x 3 x 3	-	-	-	-	-	-	-	-	4	10
Chestnut	6 x 3 x 3	-	-	-	-	-	-	-	-	4	10
Birch	6 x 3 x 3	-	-	-	-	-	-	-	-	4	10

144 dining capacities

	Length x Width x Height	1m	Standard
144 Snug	5 x 5 x 4	8	20
144 Lounge	6 x 6 x 4	16	30
144 Main Restaurant	9 x 9 x 4	45	65
144 Outdoor Terrace	60sq.m	46	68
Queens	8 x 6 x 4	14	40

Please note all room measurements are approximate.

144-150 Richmond Hill, Richmond-upon-Thames, Surrey, TW10 6RW

020 8940 2247

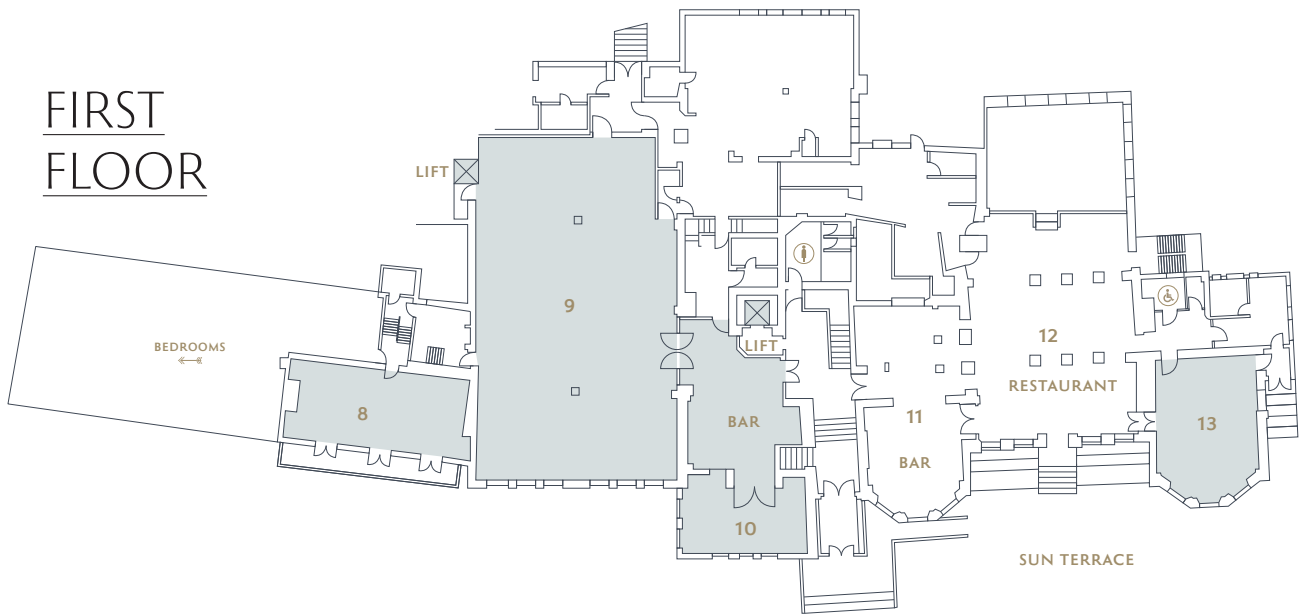
meetingsandevents@richmondhill.co.uk

www.richmondhill-hotel.co.uk

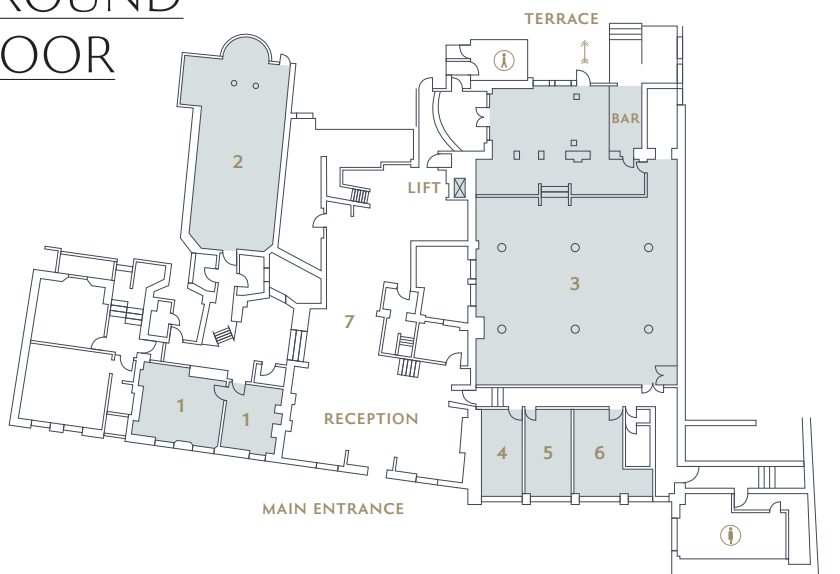
SECOND FLOOR



FIRST FLOOR



GROUND FLOOR



KEY

- 1 BEAUFORT
 - 2 OAK
 - 3 RICHMOND
 - 4 CHESTNUT
 - 5 BIRCH
 - 6 ASH
 - 7 RECEPTION
 - 8 STAFFORD
 - 9 BALLROOM
 - 10 THAMES
 - 11 BAR
 - 12 RESTAURANT
 - 13 QUEENS
 - 14 ORMOND
 - 15 WALPOLE
 - 16 CAMBRIAN
-
- MENS TOILETS
 - LADIES TOILETS
 - DISABLED TOILETS